

# MONTHLY MEMBERSHIP PROGRESS REPORT

District 2 X3

Results as of: 5/31/2026

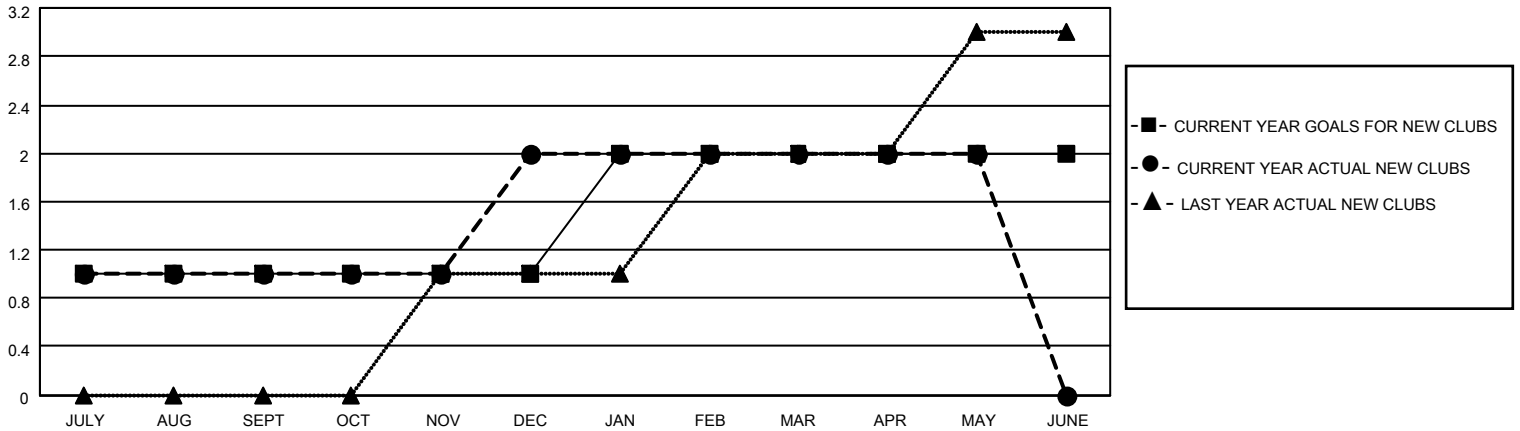
GMT:

LOCATION TEXAS

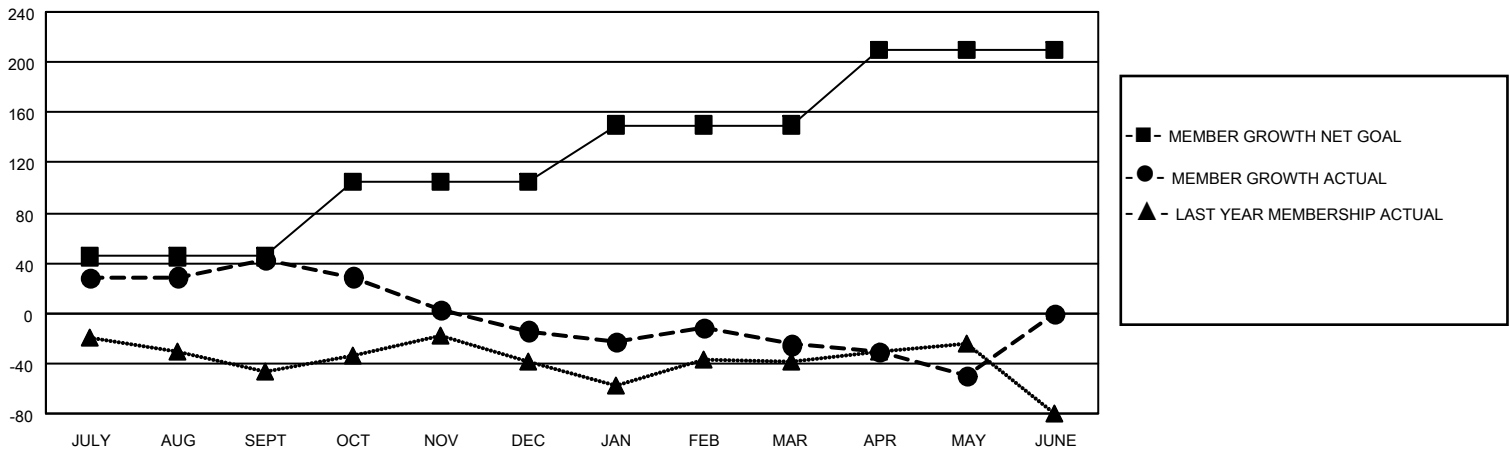
GMT CA

Clubs				Members			
RESULTS FOR 2025-2026				RESULTS FOR 2025-2026			
QUARTER	NEW CLUB GOAL	NEW CLUBS	DROPPED CLUBS	QUARTER	MEMBER GROWTH NET GOAL	MEMBER GROWTH ACTUAL	DROPPED MEMBERS ACTUAL (including transfers)
JULY/AUG/SEPT	1	1	0	JULY/AUG/SEPT	45	79	35
OCT/NOV/DEC	0	1	0	OCT/NOV/DEC	60	49	99
JAN/FEB/MAR	1	0	0	JAN/FEB/MAR	45	48	50
APR/MAY/JUNE	0	0	0	APR/MAY/JUNE	60	29	44

GOALS AND ACTUAL NEW CLUBS CUMULATIVE



GOALS AND ACTUAL MEMBERS CUMULATIVE



DROPPED CLUBS: 0	33 CLUBS OF 54 ADDED 1 OR MORE NEW MEMBERS	<b>GENDER DISTRIBUTION</b> MALE 766 (59.94%) FEMALE 511 (39.98%)
<b>DROPPED MEMBERS</b> DECEASED 10 CLUB CANCELLED 0 OTHER 218 <b>TOTAL 228</b>	<a href="#">CLICK HERE FOR CUMULATIVE MEMBERSHIP DATA</a>	TOTAL FAMILY UNIT MEMBERS 159 FAMILY MEMBERS PAYING HALF DUES 83